



ready>>slate  
by CUP4GROUP

## The FIRST Panelised Lightweight Real Slate Roofing System



RESIDENTIAL  
AND COMMERCIAL  
ROOFING








# WHY CHOOSE SLATE?

READYSLATE reduces installation time by up to 80% compared to traditional slate roofing methods.

  
**80%**  
FASTER

Due to its modular design and minimal product waste, READYSLATE utilizes up to 40% less natural slate, resulting in cost savings and reduced structural weight.

  
**40%**  
LESS PRODUCT  
WASTE

Slate's beauty and durability enhance property value with minimal upkeep. READYSLATE uses high-quality, hand-quarried CUPA natural slates found on some of the world's oldest and most magnificent buildings.

  
**100%**  
NATURAL SLATE







# Savings



## HUGE SAVINGS ON SLATE ROOFING

READYSLATE® offers an affordable and easy-to-install natural slate roofing solution. Pre-assembled panels save time and labor costs with a simpler step installation process.







# Benefits



## DURABILITY

Slate is a durable, weatherproof, fire-resistant natural material known for its longevity, high strength, and timeless beauty.



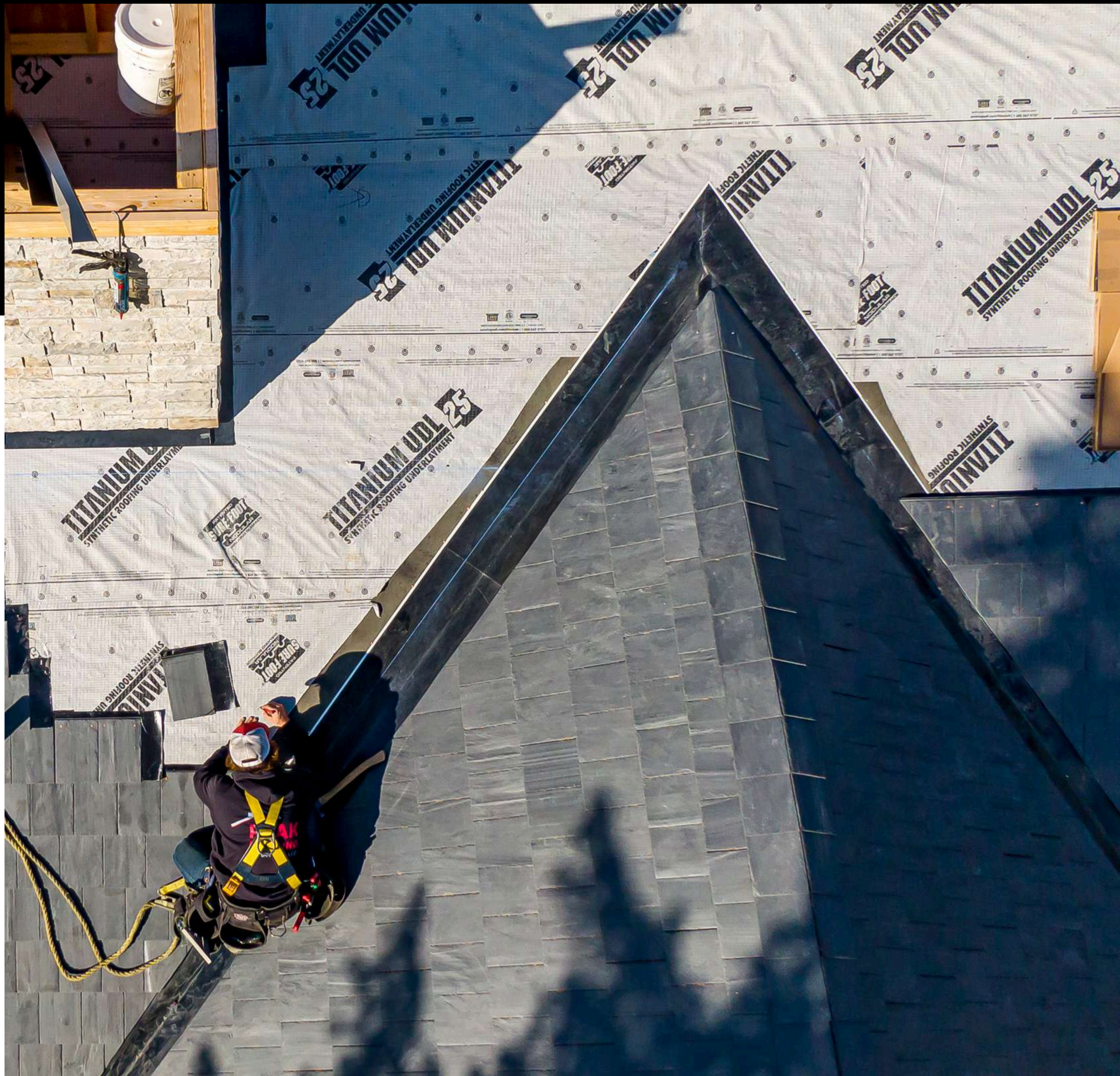
## SUSTAINABILITY

Our natural slate is hand-split without additional chemicals, offering unmatched material quality with low environmental impact.



## PERSONALITY

The slate tile's natural luster and unique texture highlight its elegance and character, providing a one-of-a-kind and timeless look for projects.

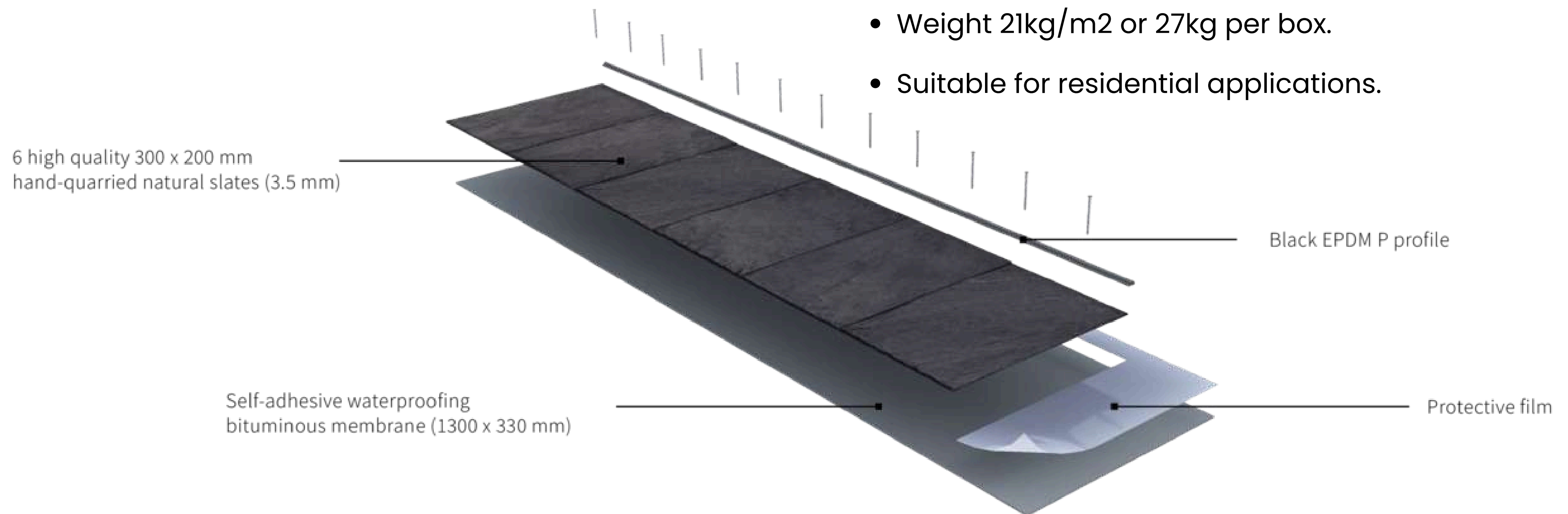






# Features

- Panel size 1300 x 330 x 6mm
- The top layer consists of 6 x Natural Slates size 300 x 200 x 3.5mm
- The bottom layer consists of an SBS waterproofing membrane
- Natural Slate is manufactured from Tectonic Compression with 3.5mm pre-drilled holes
- Weight 21kg/m<sup>2</sup> or 27kg per box.
- Suitable for residential applications.







# Scope of Use

READYSLATE® Roofing panels can be installed in Very High, wind zones as defined in NZS 3604:2011.



Museums



Churches



Resorts



Courts



Educational institutions



Houses







# Installation

**Readyslate®** can be installed by **Residential Roofing** quickly and cost effectively.

The system is designed to be a faster and more reliable alternative than traditional slate.

**No other artificial alternative product can compare with slate.**

**How is Readyslate roofing installed?**

[https://www.youtube.com/watch?v=-wT5w\\_PUUAAs](https://www.youtube.com/watch?v=-wT5w_PUUAAs)

**How is Cupaclad cladding installed?**

<https://www.youtube.com/watch?v=aD6g9qPooCo>





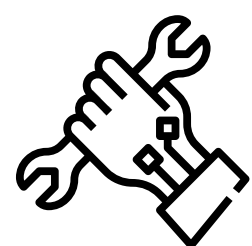


# Advanced



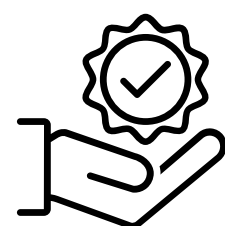
## LIGHTWEIGHT

READYSLATE® modules are lightweight and flexible while maintaining strength and resistance, meeting residential roofing standards at under 6 lbs per sqft.



## EASY TO INSTALL

READYSLATE® modules enable installers to place 6 slate pieces at once, simplifying installation without requiring specialised methods for quicker and easier setup compared to other options.



## QUALITY

READYSLATE® modules are made of durable slate for long-lasting roofing covered by a Limited Lifetime Warranty.



## INCREASES HOUSE VALUE

READYSLATE® modules add value to properties with a high return on investment and enhanced curb appeal due to the unmatched natural beauty of slate compared to artificial alternatives.







# More Information

READYSLATE® roofing is composed of two layers.

- **SUPPORT LAYER** is a waterproofed bituminous self-adhesive membrane composed of a non-woven polyester felt reinforcement and covered with SBS-modified mastic.
- **VISIBLE LAYER** which comprises a high-quality 3-4mm thick hand-quarried natural slate with a density of 2850 Kg/m<sup>3</sup>. The grade of Slate is ASTM S-1 Grade.







# About

ReadySlate® is **the world's inaugural pre-assembled** natural slate roofing system, crafted and patented by CUPA GROUP.


It complements our CupaClad Natural slate rain-screen façade system. ReadySlate® harnesses over 500 million years of natural formation, delivering unparalleled and unsurpassed qualities.








# Get a Free Quote

  
**80%**  
FASTER

  
**40%**  
LESS PRODUCT  
WASTE

  
**100%**  
NATURAL SLATE

**Contact Us for more information:**

 **0800-880-066**

[residentialroofing.co.nz](https://residentialroofing.co.nz)  
[quotes@residentialroofing.co.nz](mailto:quotes@residentialroofing.co.nz)

